

Natural Resources Conservation Service

## Soil and Plant Science Division

East Central Glaciated Soil Survey Region 11



### Findlay, Ohio, Soil Survey Office

## Assisting Wetland Identification Using Offsite Methods

### Purpose

The soil science staff at the soil survey office in Findlay, Ohio, assisted in reducing the growing backlog of wetland determinations in northwest Ohio. This assistance was provided to ensure that customers received a more timely response.

### Background Information

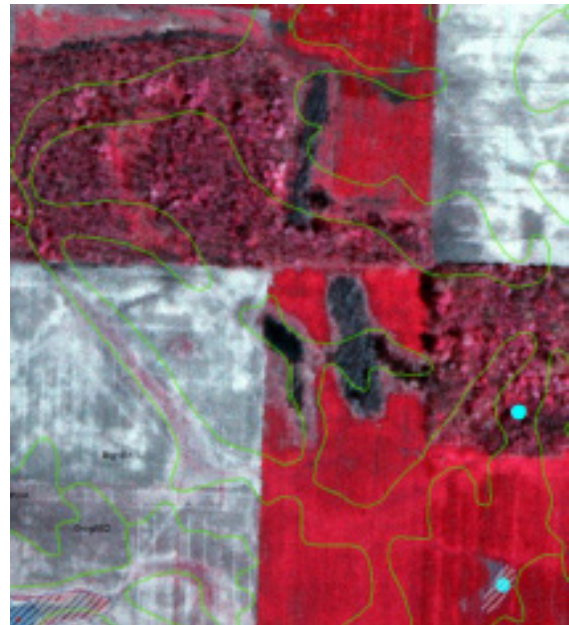
Matthew Tucker, soil scientist at the soil survey office in Findlay, Ohio, assisted the NRCS field office staff in Allen County, Ohio, reduce an excess of wetland determinations. Determination requests ranged from over a year old to as new as a few months. This effort was accomplished as part of our customer focus and to ensure that customers received a timely response to their requests.

### Key Outcomes

Twenty-three offsite wetland determination requests were completed. Completion of each request allows a producer to make changes to the selected tracts in question. Without a completed determination, producers are unable to make changes, which can delay crucial planting dates. Due to a vacancy in the Resource Soil Scientist position for northwest Ohio, producer requests remained unanswered. Without the quick response of the staff at the Findlay soil survey office, producers may not have received the timely response they deserve.

### Future Goals

In addition to completing offsite wetland determinations, the soil science staff is planning the completion of onsite wetland determinations to assist field offices help their customers. Despite vacant positions, the timely delivery of wetland determinations is necessary to help producers stay in compliance with USDA standards.



**Figure 1. —Several layers are considered in determining wetlands, including soil type, National Wetland Inventory, and 1980's Color Infrared High-Altitude Photography.**

